
Operating Instructions for Champ™ 3/Champ™ 5



Champ™ 3

Champ™ 5



INDUSTRIAL HOT MELT GLUE GUN

Table of Contents

| | |
|--|-----------|
| Product Description | 3 |
| Trouble-Shooting | 4 |
| General Safety Instructions | 5 |
| Start-up | 7 |
| Operation | 9 |
| Additional Information | 10 |
| Spare Parts Legend Champ™3..... | 11 |
| Spare Parts Legend Champ™5..... | 13 |
| Customer Service Policies..... | 15 |

Champ™ 3 & Champ™ 5 Hot Melt Glue Gun

Dear customer,

Thank you for purchasing the Champ3 or Champ5 Hot Melt Glue Gun. The glue gun you purchased will help you to glue parts together easily and effectively. Before using the gun, *please read these instructions thoroughly.*

Product Description

Proper Use

The gun works with and dispenses hot glue. Therefore, the glue gun should only be used by qualified people. Handling the gun properly will save you unnecessary accident hazards and problems.

Personal injury or material damage caused by an improper use of the Hot-Melt Glue Gun shall not be the manufacturer's but the user's responsibility.

Technical Data

Champ™3

Champ™5

| | | |
|---------------------------|---------------------|----------------------------------|
| Connection | 120/240V**/50Hz | 120/240V**/50Hz |
| Heating capacity | 200W | 200 W |
| Temperature control | thermostat | thermostat |
| Temperature control range | approx. 374°F/190°C | approx. 175 - 455°F / 80 – 235°C |
| Heat-up time | approx. 10 min. | approx. 10 min |
| Tank capacity | 0.18 lb / 80g | 0.33 lb / 150 g |
| Max. application per min. | 0.22 lb / 100 g | 0.22 lb / 100 g |
| Weight hand gun | 1.65 lb / 750 g | 2.65 lb / 1200 g |

Accessories

- **Special nozzles available on request.** Please ask for our accessory nozzle leaflet.

Trouble-Shooting

Possible Fault Signals and Assistance in Trouble-Shooting

In case of damage, send glue gun to Glue Machinery Corporation™. We will not be responsible for any repair made by the customer.

| Problems | Possible Causes/ Faulty Operation | Trouble-Shooting |
|---|--|---|
| No or too little glue comes off though the heat-up time has been exactly observed | <ul style="list-style-type: none">• clogged nozzle• temperature too low | <ul style="list-style-type: none">• unscrew nozzle, clean or replace it• check temperature |
| Glue is too fluid or too consistent | <ul style="list-style-type: none">• temperature too high or too low | <ul style="list-style-type: none">• check temperature |
| Glue leaks out of nozzle | <ul style="list-style-type: none">• clogged nozzle | <ul style="list-style-type: none">• unscrew nozzle, clean it carefully or replace it. Unscrew nozzle at working temperature, wear gloves (risk of burning). |
| No temperature | <ul style="list-style-type: none">• gun switched off | <ul style="list-style-type: none">• connect plug to socket properly.• if necessary, return gun to Glue Machinery Corporation |

General Safety Instructions

User's Care and Diligence

The Glue Gun has been designed and fabricated according to the applicable harmonized standards and further technical specifications. So, it is state of art and ensures a maximum of safety.

This safety, however, can only be achieved in practice, if all necessary measures have been taken. The user of the device shall be obliged to plan these measures and to make sure that they are taken.

In particular, the user shall ensure that

- the gun is in working order
- the required personal protective equipment (protective gloves) for the operating personnel is available and used
- the entire operating instructions are in legible condition and available to the operator
- only sufficiently qualified and authorized personnel operates and maintains the gun
- this personnel is regularly instructed in the applicable aspects of operational safety and environmental protection, and knows the operating instructions and, in particular, the safety instructions.

Make the information available:

This operating manual shall be kept on the site of operation. It must be ensured that all persons operating the gun can look into the manual at any time. In addition to the operating manual, the instructions pursuant to the Factory Act and the regulations as regards the use of equipment shall always be at the operator's disposal.

Meaning of the Various Safety Symbols

This operating manual shall give concrete advice as to safety to draw the user's attention to remaining unavoidable hazards. These hazards imply dangers to

- persons
- product and equipment

The symbols used in the operation manual shall, in particular, call attention to the safety instructions!



This symbol indicates that there is, above all, danger to persons, but also to equipment and material.

Caution: Hot surface!

Accident Prevention Regulations VBG 125 - W26

Hot surfaces such as machine parts, tanks or materials, but also hot liquids cannot always be perceived. The utmost caution is advised when this symbol is attached to a component.

Always wear protective gloves when you have to touch hot surfaces!

Champ™ 3 & Champ™ 5 Hot Melt Glue Gun

Safety Measures for Normal Operation

This industrial instrument must only be used by persons trained and instructed to use it. User must familiarize themselves with all information provided in this manual.

Prior to each use, check the gun for visible damage and make sure that it is in perfect condition. Advise detected defects to your superior at once!



Safety Instructions for the Use of the Hot-Melt Glue Gun Champ™3/Champ™5

- Always follow the accident prevention regulation **VBG 81 - Processing of Glues** issued by the Professional Association of the Chemical Industry
- Fill gun only just under the charging hole.
- **All visible material parts may warm up to 482°F / 250 °C !**
- **Never** exceed working temperature of the hot melt.
 - **Overheating may lead to decomposition which may affect health.**
- Never start working without having mounted a nozzle.
- **Do not direct glue jet towards people.**
- Prior to any nozzle replacement, unplug connecting cable.
- When a nozzle is replaced, liquid glue may leak out. **Warning: Risk of burning!**
- Never bring the hot nozzle in contact with the cable.
- Ensure sufficient ventilation.
- Do not inhale vapour escaping from the glue. **Attention: inhaling this vapour may cause irritations of the respiratory tract.**
- **When your skin comes into contact with hot glue, cool it with cold water immediately.**
- **Do not try to remove hot melt from the skin first. If necessary consult your doctor.**
- **If hot adhesive gets into your eyes, immediately cool/run them under running water for about 15 minutes and consult your doctor at once!**
- **Never work without protective gloves and glasses!**
- **Never fill in any solvents or paraffines to avoid risk of explosion.**

Note:

- ***Do not lay gun on its side***
- ***Never overcharge gun***
- ***Press trigger only when gun is heated***
- ***Before you change the glue type, pump residual quantity out of the nozzle***
- ***Do not direct glue jet towards people***
- ***Do not carry out overhead work***
- ***Do not hold nozzle top upward***
- ***Never work without having mounted a nozzle***
- ***Stop using the gun, if casing is damaged due to shock, breakage or heavy wear.***

Start-up and Operation

To avoid risk of tripping/falling:

Lay all instrument connections (cable, hoses, and lines) so that they do not cause any risk of stumbling (cable conduits, bridges)!

Operation of the Glue Gun

Plug connecting cable of the Champ™3/Champ™5 Glue Gun into socket with ground contact.

Glue Gun Champ™3

The Champ™3 gun is fixed to a temperature of 374°F / 190°C and, thus, appropriate for all the glue granulates normally used.

For special granulates, use a screw driver to adjust the temperature accordingly, at the rear side of the gun. The maximum temperature of 455°F / 235 °C is set at the proper stop limit.

Glue Gun Champ™5

Adjust working temperature requested. The temperature of the Champ™5 Glue Gun is adjustable between approx. 175°F / 80 °C and 455°F / 235 °C. For this, set rotary button to the desired position:

| | | | | | |
|---|---|------------------------|----|---|------------------------|
| 4 | ≡ | approx. 175°F / 80 °C | 10 | ≡ | approx. 395°F / 200 °C |
| 6 | ≡ | approx. 290°F / 145 °C | 12 | ≡ | approx. 455°F / 235 °C |

Minor leaking during heat-up is due to hot melt expanding in the nozzle/heating chamber.

**Warning: Once the gun has warmed up, nozzle and cover are extremely hot!
Never work without wearing protective gloves!**

Loading of Glue

- The Champ™3/Champ™5 Glue Gun is designed for applying solvent-free hot melts. Never fill the gun with other materials. The hot-melt glue gun can work with all the types of hot melts that are designed for working temperatures of up to max. 455°F / 235 °C.
- As soon as the gun has warmed up (approx. 10 min.), open cover and fill granulate into the gun until it fills just under the rim of the charging hole.
- Close cover and allow some time for the glue gun to melt the glue (approx. 10 min. depending on type of glue).
- The quantity to be applied can be determined by pressing the trigger: the longer you press, the more glue comes out.

The cover must only be opened when the gun has warmed up!

Champ™ 3 & Champ™ 5 Hot Melt Glue Gun

Application of Hot Melts

Only start glueing when the glue has properly molten.

Make yourself familiar with the instrument first. Apply a little glue in varying forms (small, large dots) on a piece of paper or cardboard. Observe the correct working temperatures of the individual hot melts.

Never start working without having mounted a nozzle!

Press the trigger only when gun has warmed up!

Vent in the corner must, by all means, be left open.

Nozzle Replacement

Only replace nozzles when the glue gun is warm (instrument temperature 140 – 176°F (60 - 80°C) and empty. You are advised to wear protective gloves.



Prior to exchanging nozzles, unplug connecting cable!

Replacing a cold nozzle may damage the gun. If the nozzle is replaced when it is too hot, liquid adhesive may leak out.



Attention: Risk of burning!

- If your skin contacts with hot glue, cool it immediately with cold water.
- Do not try to remove hot melt from the skin first. If necessary, consult your doctor.
- If hot adhesive gets into your eyes, immediately cool them under running water for about 15 minutes.
- **Consult your doctor at once!**



Never start working without having mounted a nozzle!

Do not direct glue jet towards people!

Operation

The glue gun shall only be used/applied according to its intended use. Please see Section “General Safety Instructions”.

Improper use of the gun may cause personal injury or material damage.

Non-observance of the safety instructions when working with the gun may lead to serious burns and/or product damage.

Please refer to the following checklist before you switch on the glue gun:

Check List

- Is the glue gun connected to a 120/240 volt outlet?
- Is the nozzle clean and free of any foreign matter?
- Is solvent-free hot melt in the gun?
- Has the heat-up time of approx. 10 minutes (depending on the glue type) been observed?



While you are working...

...the glue gun must always be deposited on the wire strap.

Never lay gun on its side!

- Open gun only if required; cover can only be opened while gun is warm.
- Keep hot melt free of dirt and humidity.

General Hints

- Do not start glueing before glue is fluid.
- Glues that have not molten completely will not reach the glueing temperature required.
- Not having the required glueing temperature, glues cannot produce optimum glueing results.
- Due to the high viscosity of partly molten glues a lot of manual energy will be needed to dispense them.
- This will cause some essential parts of the gun to wear very fast .

Cleaning and Maintenance

Only fill clean and solvent-free glue into the gun. Contaminated glue, nails, clamps, sand, etc. cause malfunctions. The use of solvents, petrol, benzole, toluol, acetone, terpentine, etc. will lead to an explosion. Never use these materials!

If you observe the operating instructions, the gun does normally not need major cleaning.

If the gun is used frequently, to ensure peak performance and durability, it is important that it be maintained and serviced regularly. To set a date, please call our service department. 1-888-202-2468

ADDITIONAL INFORMATION

EC-Conformity Certificate

acc. to EC Guideline 89/392/EEC, Supplement IIA

This is to certify that the below-described machine, as regards its design and type, as well as the construction sold by us, is in conformity with the relevant safety and health regulations of the EC guideline.

| | | |
|----------------------------|---|---------------------------------------|
| Description of the machine | : | Champ™3/Champ™5 Glue Gun |
| Intended use | : | Application of solvent-free hot melts |
| Type of machine | : | Champ™3/Champ™5 |
| Serial number | : | |

Design modifications influencing the technical data specified in the operating manual and the intended use, thus meaning a considerable change of the device, render this conformity certificate invalid!

Relevant EC guideline : EC Machine Guideline (89/392/EEC)
Amendment of Machine Guideline (91/368/EEC)

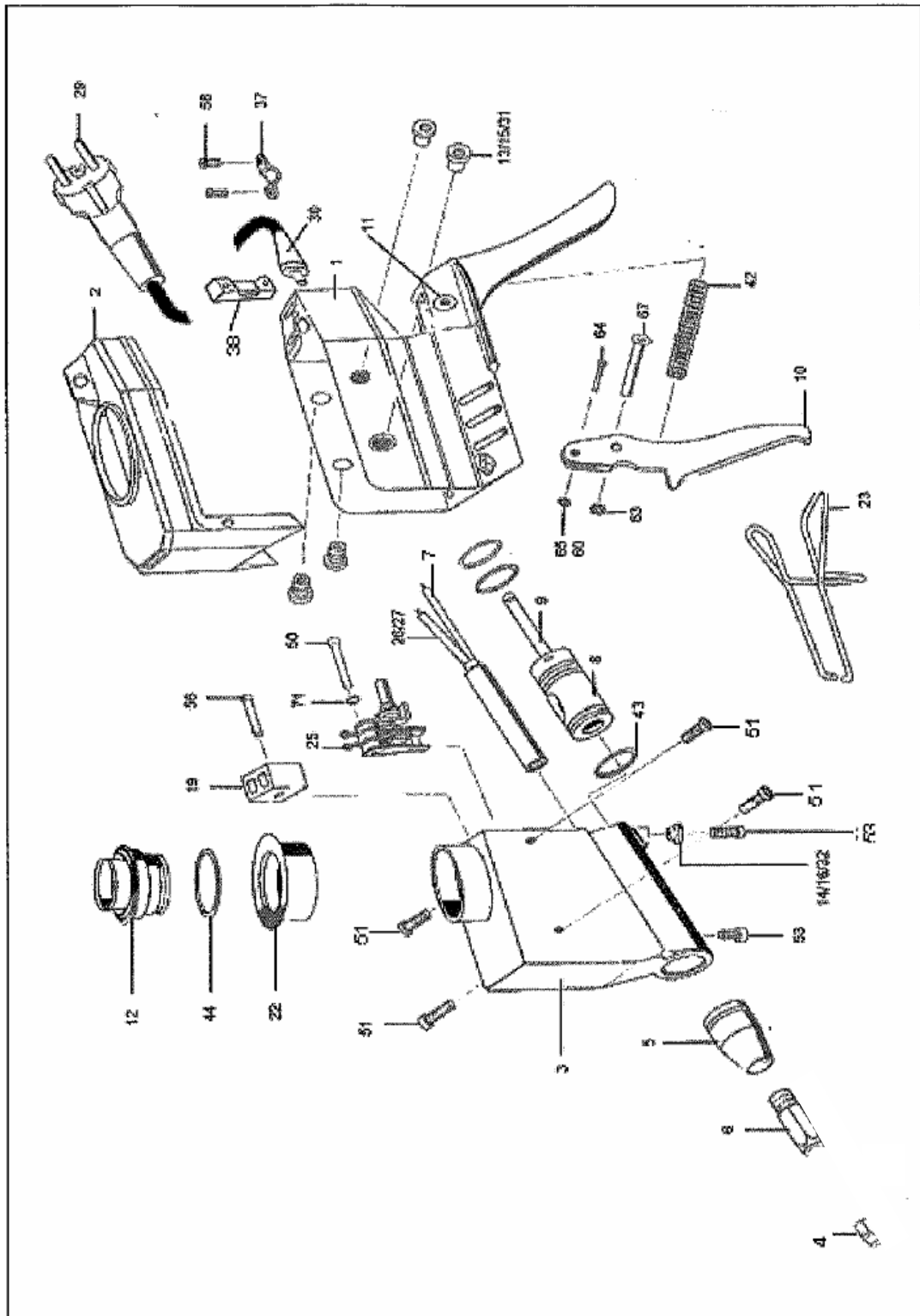
The following harmonized standards have been applied : EN 60204 Part 1 (DIN VDE 0113 Part 1)
EN 292 Parts 1 and 2, EN 349, EN 294

An original version of the operating instructions for the glue gun, in the national language of the user - here English - is enclosed.

Date: December 2001

Champ™ 3 & Champ™ 5 Hot Melt Glue Gun

Spare Parts - Champ™3



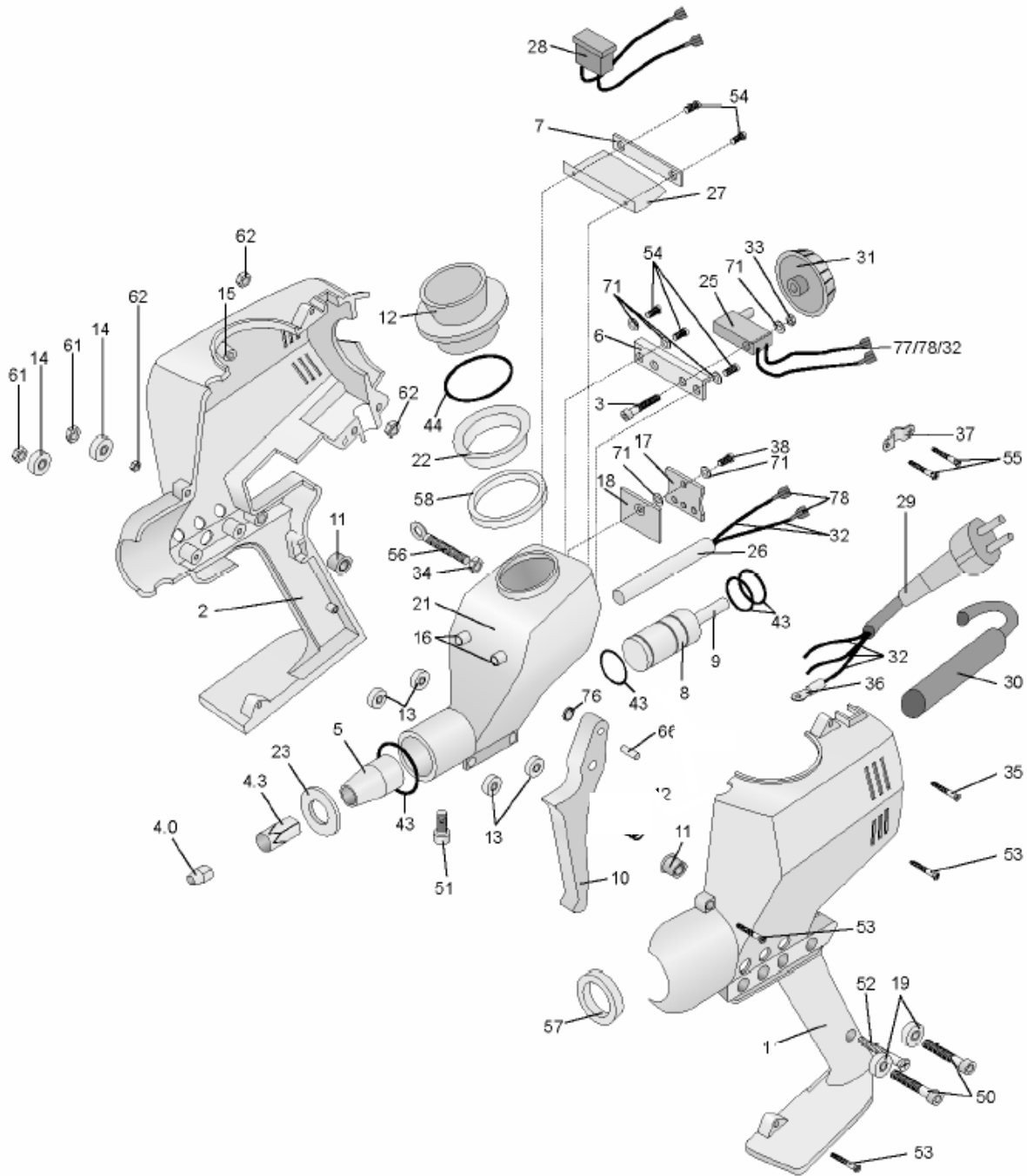
Champ™ 3 & Champ™ 5 Hot Melt Glue Gun

SPARE PARTS – CHAMP™3

| Pos. | Order Part Number | Name |
|------|-------------------|-----------------------|
| 1 | 3859 | Casing part |
| 2 | 3861 | Cap |
| 3 | 3857 | Melting container |
| 4 | 2505 | Nozzle |
| 5 | 3759 | Exit piece |
| 6 | 3961 | Nozzle adapter |
| 7 | 3808 | Silicone tube |
| 8 | 3762 | Piston cpl. |
| 9 | 3763 | Piston rod |
| 10 | 3810 | Trigger |
| 11 | 3765 | Bearing sleeve |
| 12 | 3885 | Lid cpl. |
| 13 | 3863 | Insulating sleeve |
| 14 | 3864 | Insulating sleeve |
| 15 | 3865 | Distance sleeve |
| 16 | 3866 | Distance sleeve |
| 19 | 3868 | Ceramic grip |
| 22 | 3870 | Collar |
| 23 | 3882 | Stand |
| 25 | 3871 | Thermostat |
| 26 | 3872 | Heating element 240 V |
| 27 | 3894 | Heating element 120 V |
| 29 | 3783 | Cord with plug |
| 30 | 3858 | Bending protection |
| 31 | 3873 | Rivet |
| 32 | 3874 | Rivet |
| 37 | 3895 | Clamp |
| 38 | 3860 | Bride |
| 42 | 3845 | Pressure spring |
| 43 | 3791 | o-ring |
| 44 | 3827 | o-ring |
| 50 | 3877 | Cyl. screw |
| 51 | 3878 | Screw |
| 53 | 3794 | Screw |
| 56 | 3879 | Cyl. Screw |
| 58 | 3788 | Cyl. Screw |
| 60 | 3818 | Ring |
| 63 | 3880 | Washer |
| 64 | 3802 | Adaptor sleeve |
| 65 | 3814 | Adaptor sleeve |
| 67 | 3867 | Rivet |

Champ™ 3 & Champ™ 5 Hot Melt Glue Gun

SPARE PARTS – CHAMP™5



Champ™ 3 & Champ™ 5 Hot Melt Glue Gun

SPARE PARTS - CHAMP™5

| Pos. | Order Part Number | Name |
|------|-------------------|------------------------------|
| 1 | 3751 | Casing part left |
| 2 | 3752 | Casing part right |
| 3 | 3848 | Screw M4 x 25 |
| 4 | 2505 | Nozzle |
| 4.3 | 3961 | Nozzle adapter |
| 5 | 3759 | Exit piece female |
| 6 | 3850 | Angle |
| 7 | 3761 | Rule |
| 8 | 3762 | Piston cpl. |
| 9 | 3763 | Piston Rod |
| 10 | 3764 | Trigger cpl. Consists of: |
| | 3820 | Trigger |
| | 3851 | Pin |
| 11 | 3765 | Bearing Bush |
| 12 | 3766 | Filter cap cpl. |
| 13 | 3767 | Insulating Sleeve |
| 14 | 3768 | Insulating Sleeve |
| 15 | 3769 | Distance Sleeve |
| 16 | 3770 | Distance Sleeve |
| 17 | 3771 | Connector plate |
| 18 | 3772 | Insulating plate |
| 19 | 3773 | Adaptor |
| 21 | 3828 | Melting block |
| 22 | 3775 | Collar |
| 23 | 3776 | Washer |
| 25 | 3889 | Thermostat |
| 26 | 3778 | Heating element 220 V |
| -, | 3779 | Heating element 110 V |
| 27 | 3780 | Protector |
| 28 | 3781 | Indicator lamp 220 V |
| -, | 3782 | Indicator lamp 110 V |
| 29 | 3783 | Cord with plug |
| -- | 3886 | Cord with UL plug |
| 30 | 3785 | Bend protection |
| 31 | 3959 | Adjusting knob |
| 32 | 3808 | Silicone tube |
| 33 | 3849 | Nut M4 |
| 34 | 3856 | Nut M5 |
| 35 | 3846 | Screw |
| 36 | 10241 | Cable lug |
| 37 | 3787 | Clamp |
| 38 | 3847 | Screw M4x12 |
| 42 | 3790 | Pressure spring |
| 43 | 3791 | O-ring |
| 44 | 3805 | O-ring |
| 50 | 3793 | Cyl. Screw |
| 51 | 3794 | Cyl. Screw |

Champ™ 3 & Champ™ 5 Hot Melt Glue Gun

| | | |
|----|------|------------------------|
| 52 | 3795 | Tapping screw |
| 53 | 3796 | Screw 3x18 |
| 54 | 3797 | Cyl. Screw |
| 55 | 3798 | Screw 3x16 |
| 56 | 3799 | Screw |
| 57 | 3329 | Ring silicone 20/35x8 |
| 58 | 3330 | Ring silicone 45/58x15 |
| 61 | 3800 | Nut |
| 62 | 3801 | Nut |
| 66 | 3802 | Rivet |
| 71 | 3803 | Washer |
| 76 | 3818 | Ring |
| 77 | 3835 | Cord |
| 78 | 3834 | Sleeve |

CUSTOMER SERVICE POLICIES

Standard Parts:

- Customer Service will strive to ship stock parts within 24 hours of receipt of purchase order.
- Most non-stock parts will be available for shipment within 5-10 business days of receipt of purchase order.
- A \$50.00 minimum order is required on all orders.
- A 30% re-stock fee will apply to all returned parts received in new and operable condition within 30 days of shipment.

Special Parts:

- Special non-stock items may have considerable lead times. Customers who use special (non-stock) items are encouraged to keep these items in stock.
- Returns are acceptable at the sole discretion of Glue Machinery Corporation. No equipment or goods are to be returned without a Glue Machinery return authorization number. If an item is deemed returnable, a re-stocking fee of up to 50% will apply to special or non-stock items.

Shipments:

- Most shipments are routed U.P.S. Shipments over 150 pounds are forwarded via trucking service.
- Shipments will be routed by other means (air freight, bus, etc.) upon request.

Same day (24 hour) special handling:

- Rush orders are accepted. Orders received after 3:00 p.m. EST, will be assessed a handling charge of \$25.00.

NOTE: CUSTOMER SERVICE DIRECT DIAL PARTS - 1-888-202-2468

Prices and Terms subject to change without notice.

TECHNICAL SERVICE POLICIES

Installation Supervision:

- **Glue Machinery Corporation provides technical supervision at a rate of \$750.00 per day, plus expenses.**
- **Two weeks notice is necessary to schedule Glue Machinery Corporation technical personnel.**
- **Customers are responsible for pre-installation preparation. Information is provided for machine and head mounting, electrical information, timing information, etc.**
- **Missed appointments, or those cancelled with less than 24 hours notice, will be charged at the full rate of \$750.00, plus expenses.**
- **If Customer is not prepared for a scheduled service visit, the day will be charged at \$750.00 plus expenses.**

Technical Service (in-field repair):

- Technical service personnel are available to all Glue Machinery Corporation customers. Glue Machinery Corporation should be contacted at 888-202-2468 if a technician is needed.
- Service charges are: \$100.00/hour - Monday through Friday, plus expenses; and \$120.00/hour on weekends and holidays, plus expenses. Mileage is charged at \$0.45/mile. Minimum service charge is \$325.00 plus expenses. Under certain circumstances, time is charged from the time a Glue Machinery Corporation technician leaves his location until he returns to that location. The customer will be notified in advance of this situation and the customer must authorize these charges.

Repairs (at Glue Machinery Corporation facility):

- Items determined repairable are invoiced at material plus \$75.00/hour labor. Estimates will be made to the customer when requested.
- Most parts are repairable and should not be discarded. Please call Glue Machinery personnel to determine the feasibility of repairing questionable equipment.
- Customer is responsible for all freight charges.

CONDITIONS OF SALE

1. **ACCEPTANCE** - Any purchase order issued in response to a Glue Machinery Corporation Quotation is considered to be Buyer's acceptance of the Terms & Conditions contained herein. Seller hereby objects to any additional, different or conflicting terms or conditions set forth in Buyer's purchase order. No terms, provisions, or conditions of Buyer's purchase order shall be effective unless expressly accepted by Seller in writing.
2. **ENTIRE AGREEMENT** - The provisions herein set forth, plus all drawings, constitute the entire contract between the Seller and the Buyer and supersede all prior Proposals, purchase orders, correspondence and other communications, whether written or oral, between the Seller and the Buyer. No provision of these conditions of Sale shall be subject to change except by the written authorization of a properly authorized representative of the Seller.
3. **PRICES-PAYMENT** - Terms of payment are as stated in the quotation. C.O.D. or prepayment will apply to new customers. Transactions are FOB Seller's factory exclusive of sales or use taxes. All payments shall be in the legal currency of the United States. All prices are subject to exception or change without notice. Pricing errors may be corrected at any time. The Seller may, at any time and without obligation, suspend performance or require payment in cash, security, or other adequate assurances satisfactory to the Seller when, in the opinion of the Seller in its sole discretion, the financial circumstances of Purchaser warrant such action.
4. **TAXES AND DUTIES** - The amount of all applicable taxes, (federal, state or local) will be charged unless the purchase order clearly states that the equipment of goods are tax exempt and an exemption certificate is on file at the Seller's location. Any personal property taxes assessable on the equipment or goods after delivery to the FOB point shall be borne by the Buyer.
5. **DELIVERY** - Deliveries shall be FOB Seller's plant freight collect. Buyer will keep the equipment or goods insured to the full purchase price with Seller as the named loss payee and Seller retains a security interest in the equipment or goods until the purchase price is paid.
6. **TITLE AND RISK OF LOSS** - Risk of loss or damage to the equipment or goods shall pass to Buyer F.O.B. Seller's plant. Buyer will keep the equipment or goods insured to the full purchase price with Seller as the named loss payee and Seller retains a security interest in the equipment or goods until the purchase price is paid.
7. **ENGINEERING DATA** - All Engineering data, design information, engineering and ship drawings used on the completion of this order are the property of the Seller.
8. **PATENT INDEMNIFICATION** - The Seller agrees to indemnify Buyer from and against all claims, demands and suits based on allegations that the equipment or goods designed and manufactured by Seller constitutes an infringement of any patent, if the Seller is notified promptly as the assertion of any such allegation, and if the Seller is given authority to defend the same and reasonable information and assistance for the defense of the same. Upon notification of an infringement claim, the Seller reserves the right to do any of the following, at no cost to the Buyer:
 - (a) Procure for the Buyer the right to continue using the equipment; or
 - (b) Replace the same with non-infringing equipment; or
 - (c) Modify the equipment so that it becomes non-infringing.

The Seller does not assume liability for the infringement of any method and/or process patent or for infringement of any patent covering articles manufactured or produced in accordance with Buyer's design.

CONDITIONS OF SALE (Continued)

9. RETURNS - No equipment or goods requiring repair or alleged to be defective are to be returned without authorization by the Seller.
10. FREIGHT - Buyer is responsible for all freight and forwarding charges, import fees, customs fees, duties, taxes, etc.
11. WARRANTY AND LIMITATION OF LIABILITY - All equipment and goods are warranted by the Seller to be free from defects in material and workmanship as follows:

(A) ALL ITEMS EXCEPT ELECTRICAL COMPONENTS AND HOT MELT HOSES FOR A PERIOD OF SIX (6) MONTHS FROM DATE OF SHIPMENT OR ONE THOUSAND (1,000) HOURS OF USE, WHICHEVER OCCURS FIRST.

(B) FOR ELECTRICAL COMPONENTS FOR A PERIOD OF NINETY (90) DAYS FROM THE DATE THE EQUIPMENT OR GOODS WERE SHIPPED, AND

(C) FOR HOT MELT HOSES FOR A PERIOD OF SIX (6) MONTHS FROM DATE OF SHIPMENT.

THIS WARRANTY DOES NOT APPLY TO EQUIPMENT OR GOODS WHICH ARE, BY THE SOLE DISCRETION OF THE SELLER, MISUSED, OR ABUSED, OR DAMAGED FROM INSTALLATION, OR NOT USED IN ACCORDANCE WITH SELLER'S INSTRUCTIONS. NORMAL WEAR OF EQUIPMENT OR GOODS IS NOT INCLUDED IN THIS WARRANTY. Equipment or goods not manufactured by the Seller but supplied through the Seller shall carry the warranty of the original manufacturer.

THE SELLER'S SOLE LIABILITY UNDER THIS WARRANTY SHALL BE LIMITED TO EITHER REPLACING OR REPAIRING WITHOUT CHARGE, AT ITS FACTORY OR ELSEWHERE AT ITS DISCRETION, ANY EQUIPMENT OR GOODS NOT MEETING THIS WARRANTY, OR AT SELLER'S OPTION REFUNDING THE PURCHASE PRICE. THE SELLER SHALL IN NO EVENT BE LIABLE FOR ANY OTHER DIRECT, OR ANY SPECIAL INDIRECT OR CONSEQUENTIAL DAMAGES OF ANY KIND UNDER THIS CONTRACT OR OTHERWISE. The warranties of the Seller do not cover, and the Seller makes no warranty with respect to any defect, failure, deficiency or error that is:

- (a) Not timely reported to the Seller, or
- (b) Due to misapplication, modification, disassembly, abnormal conditions of temperature, dirt or corrosive matter; or
- (c) Due to operation, either intentional or otherwise, above rated capacities or in an otherwise improper manner.

Seller assumes no responsibility for the quality or performance of coatings, adhesives or other materials used with Seller's equipment or goods. All claims must be brought within one (1) year of sale or identification of a defect. THERE ARE NO OTHER WARRANTIES, EXPRESS OR IMPLIED, INCLUDING THE IMPLIED WARRANTIES OF MERCHANTABILITY AND FITNESS FOR A PARTICULAR PURPOSE.

12. **GOVERNING LAW: ANY CONTRACT RESULTING OUT OF THIS PROPOSAL SHALL BE GOVERNED BY THE LAWS OF THE STATE OF MARYLAND. Any legal action to enforce any right granted by this contract must be filed within one (1) year after delivery or for warranty claims within one (1) year of the expiration of the applicable warranty period.**

Champ™ 3 & Champ™ 5 Hot Melt Glue Gun

NOTES: