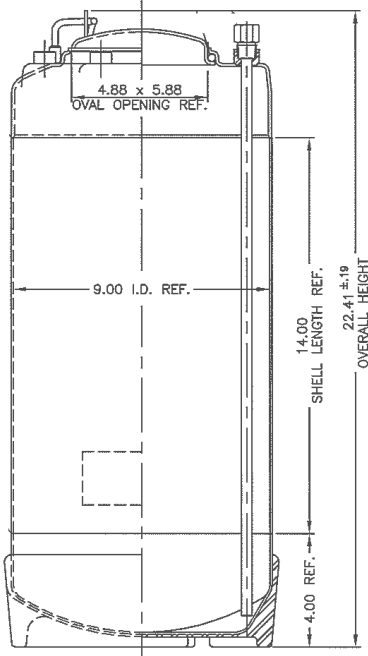
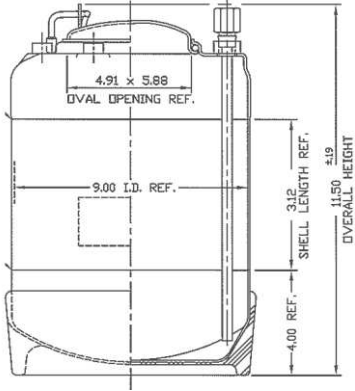


ezGluer™ 2 Basic & ezGluer™ 5 Basic

Reference Guide



Glue Machinery Corporation™

4234 Boston Street, Baltimore, MD 21224

888-202-2468 · Fax: 410-761-5127 · E-mail: info@gluemachinery.com

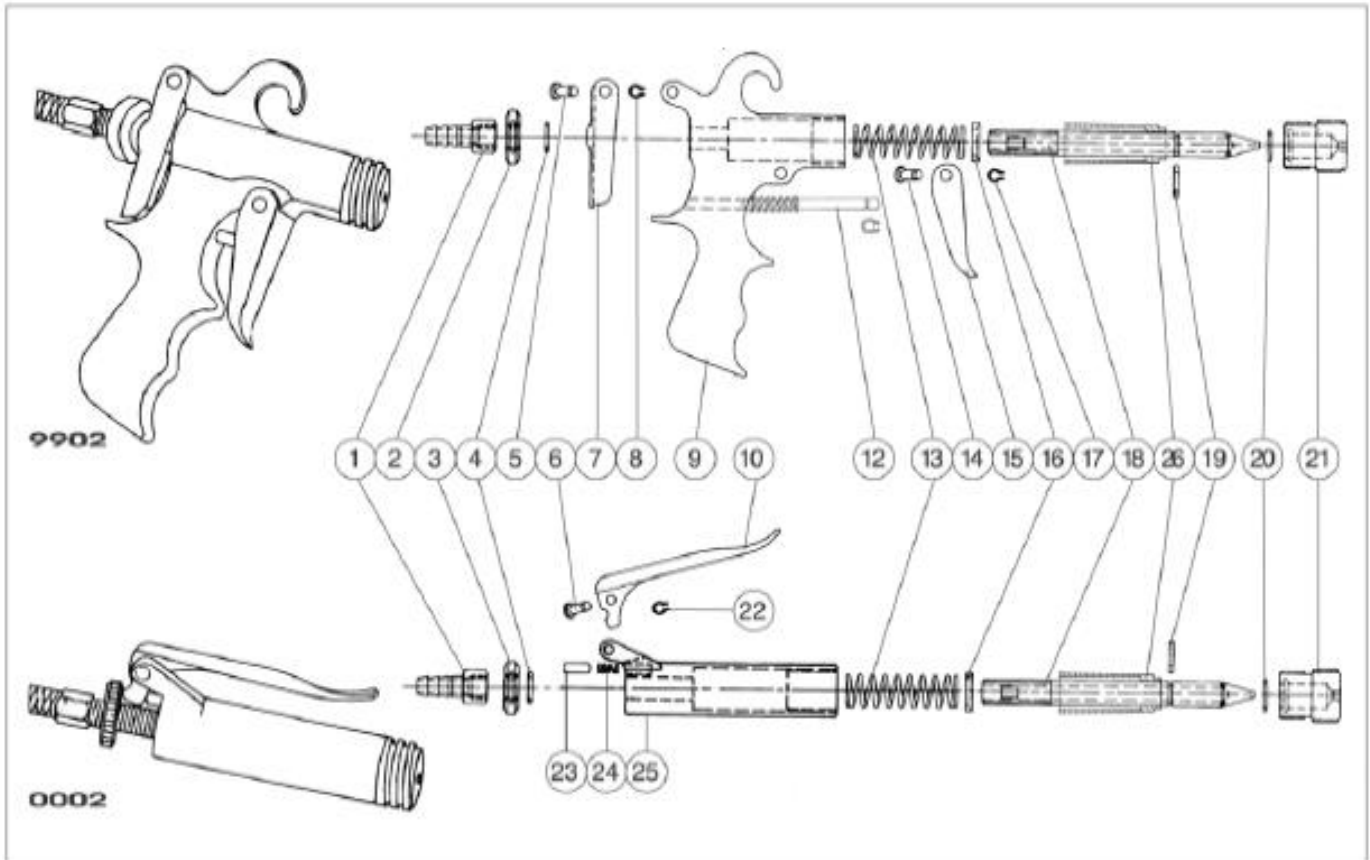
www.gluemachinery.com

ezGluer™ Basic 2 & 5 – Parts List



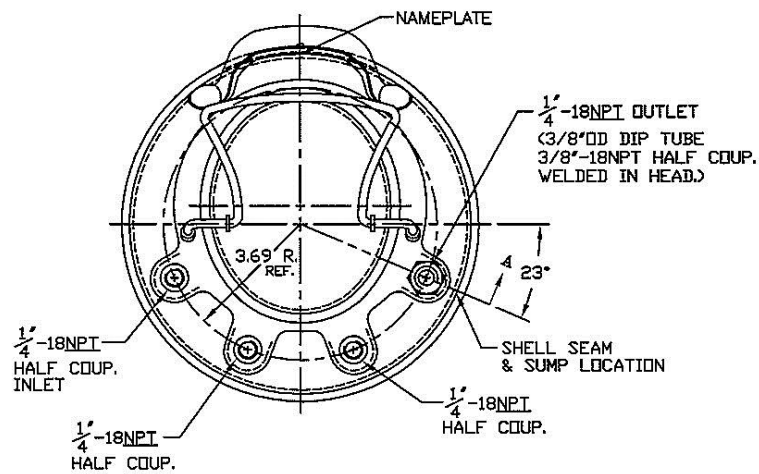
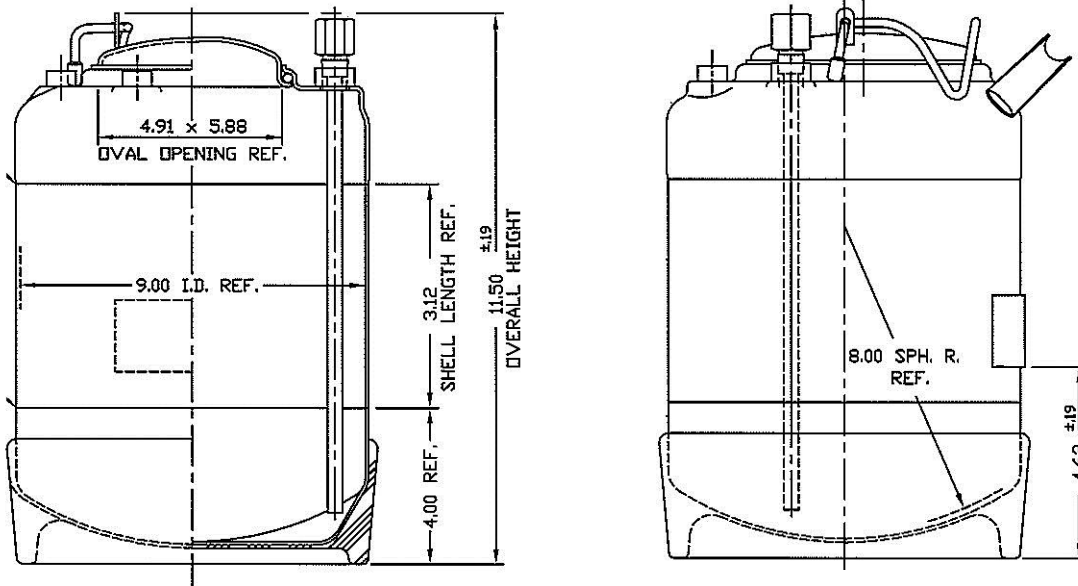
#	Description	Part #
1	2 Gallon Tank	G26E89-001
2	5 Gallon Tank	G26E89-002
3	ezGluer Handgun	G06E03-001
4	ezGluer Nozzle	G06E01-001
5	Hose Assembly w/ Fittings	G11E02-004
6	Pressure Release Valve – 90psi, 1/4npt	G11E15-001
7	Air Regulator	C00303
8	Pipe Plug	G11E54-002
9	O-Ring/Lid Seal	G26E99-001

Pistol & Gun



No.	Reference No.	No.	Reference No.	No.	Reference No.	No.	Reference No.	No.	Reference No.
1	10001	6	10006	12	10012	17	10017	22	10022
2	10003	7	10007	13	10013	18	10018	23	10023
3	10003	8	10008	14	10014	19	10019	24	10024
4	10004	9	10009	15	10015	20	10020	25	10025
5	10005	10	10010	16	10016	21	10021	26	10026

ezGluer™ 2 Basic - Dimensions & Schematics



ezGluer™ 5 Basic - Dimensions & Schematics

